



# Putting the **Wild** in Wildlands and Woodlands

How wildlands conservation is relevant and feasible in the Northeast

Daryl Burtnett     Northeast Wilderness Trust

Dea Brickner-Wood     Great Bay Resource Protection Partnership



# Wildlands

- ▣ Why Wildlands matter
- ▣ What a Wildland is, and isn't
- ▣ Examples of Wildland conservation
- ▣ Challenges and opportunities

# Wildland... what is it?



Wilderness... Here... ?







But we don't have  
Redwoods...







# Why Wildlands?

Give society time to actually understand nature and all its associated complex systems – their relationships to each other and to the lessons they offer in this era of dramatic and chaotic change

# Why Wildlands?

Give society time to actually understand nature and all its associated complex systems – their relationships to each other and to the lessons they offer in this era of dramatic and chaotic change





# Why Wildlands?

Give society time to actually understand nature and all its associated complex systems – their relationships to each other and to the lessons they offer in this era of dramatic and chaotic change



# Why Wildlands?

Give society time to actually understand nature and all its associated complex systems – their relationships to each other and to the lessons they offer in this era of dramatic and chaotic change

## *Benefits to people*

- \* ecosystem services
- \* recreation
- \* beauty



# Why Wildlands?

Give society time to actually understand nature and all its associated complex systems – their relationships to each other and to the lessons they offer in this era of dramatic and chaotic change

## *Benefits to people*

- \* ecosystem services
- \* recreation
- \* beauty

## *Moral obligation*

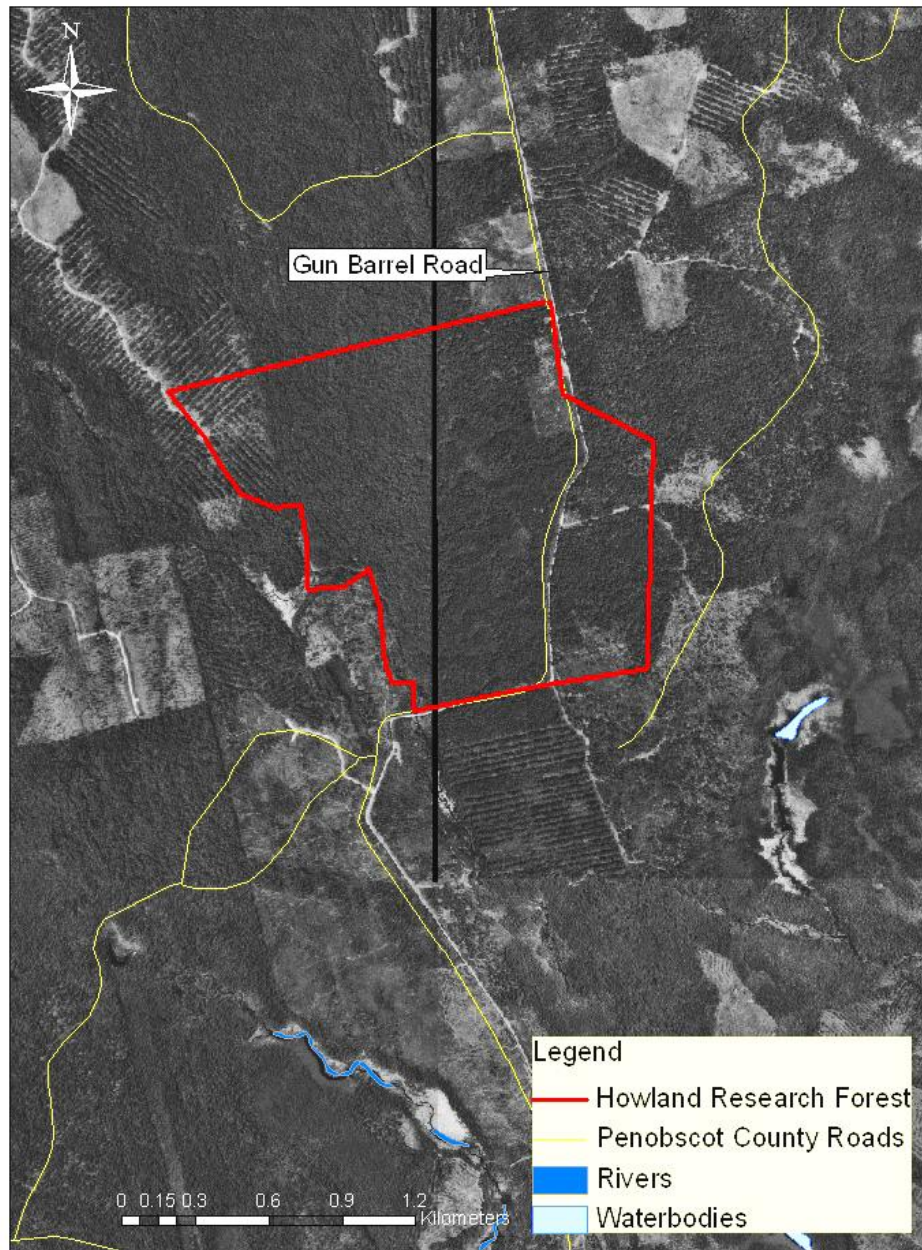
\* “We abuse land because we see it as a commodity belonging to us. When we see land as a community to which we belong, we may begin to use it with love and respect.” — Aldo Leopold







# Howland Research Forest



557 acres owned by  
Northeast Wilderness Trust

Hosts researchers from  
USFS, University of Maine,  
Woods Hole, etc

Purchased from a timber  
investment management  
organization which  
continues to manage  
surrounding forest

# What is wildland and what is wildlands conservation?

Protecting a wildland is committing to protect the land from human intervention,

to create an *opportunity for nature to freely express itself* over time

Where nature can respond to changes in the world, no matter the cause, and perhaps show us the way



# Wildlands are not necessarily...

Virgin forest

Old growth

Pristine

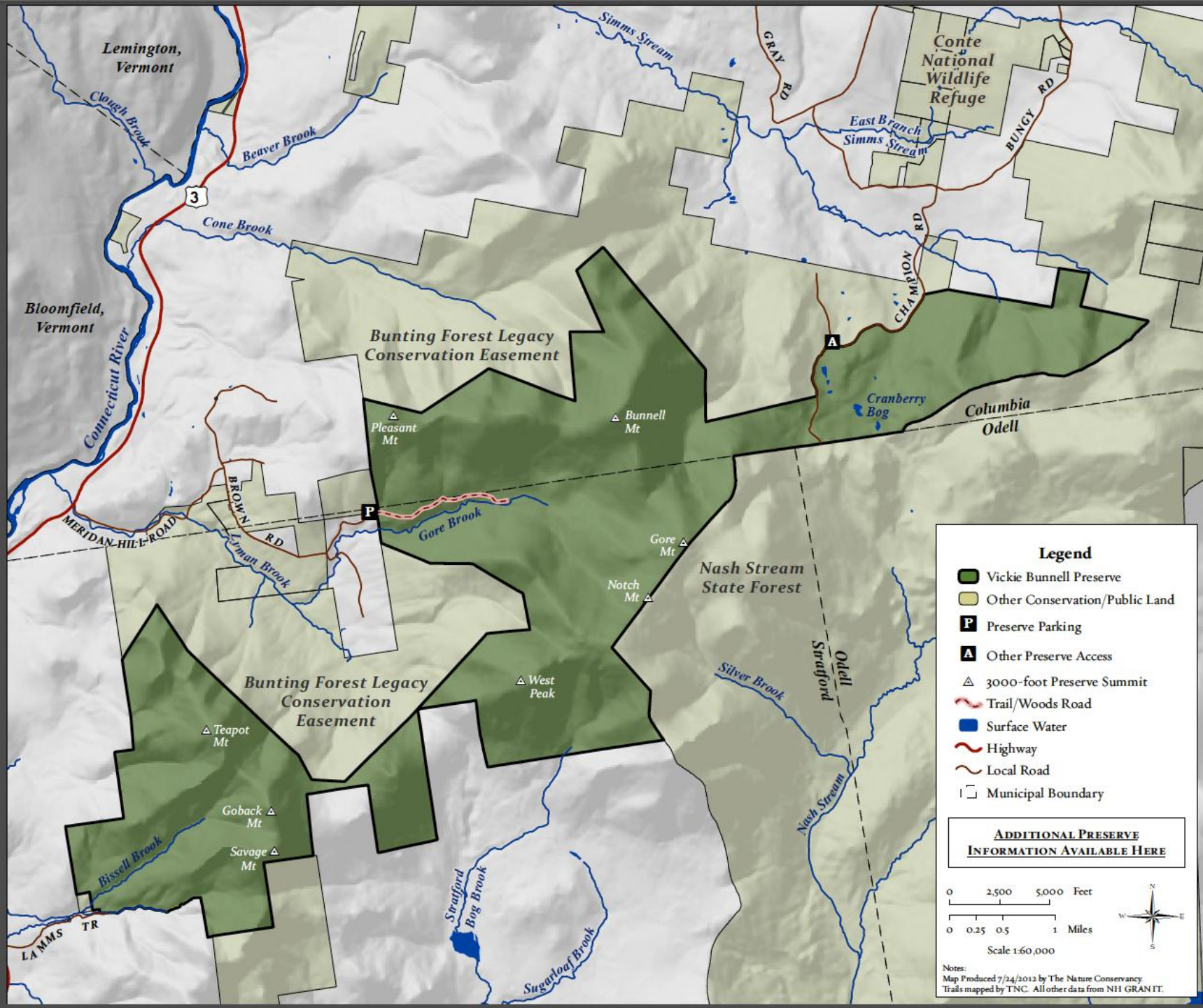
Home to rare species

# Big

But  
they  
can be







### Legend

- Vickie Bunnell Preserve
- Other Conservation/Public Land
- Preserve Parking
- Other Preserve Access
- 3000-foot Preserve Summit
- Trail/Woods Road
- Surface Water
- Highway
- Local Road
- Municipal Boundary

**ADDITIONAL PRESERVE  
INFORMATION AVAILABLE HERE**

0 2,500 5,000 Feet  
0 0.25 0.5 1 Miles  
Scale 1:60,000



Notes:  
Map Produced 7/24/2012 by The Nature Conservancy.  
Trails mapped by TNC. All other data from NH GRANIT.

All other things being equal...  
...Bigger is Better

Lots of rocky peaks and wetlands already protected... Lowlands, productive soils, not so much.

But landscape context is important too... buffers and connectivity

Smaller wildlands are still very valuable, though more vulnerable

Size can also reflect the feature protected









What wildland is not...

# What wildlands are not...

...wonderful though they are...

Wildlife Management Areas

Sustainably managed harvested  
forests

Shade grown coffee plantations

Athletic fields

Farms

Town Parks



# What to hope for...

A connected network of Wildlands  
embedded in a mosaic of other  
conservation lands...

Wildlands close to people

Wildlands that are remote

Wildlands that include all kinds of  
habitats





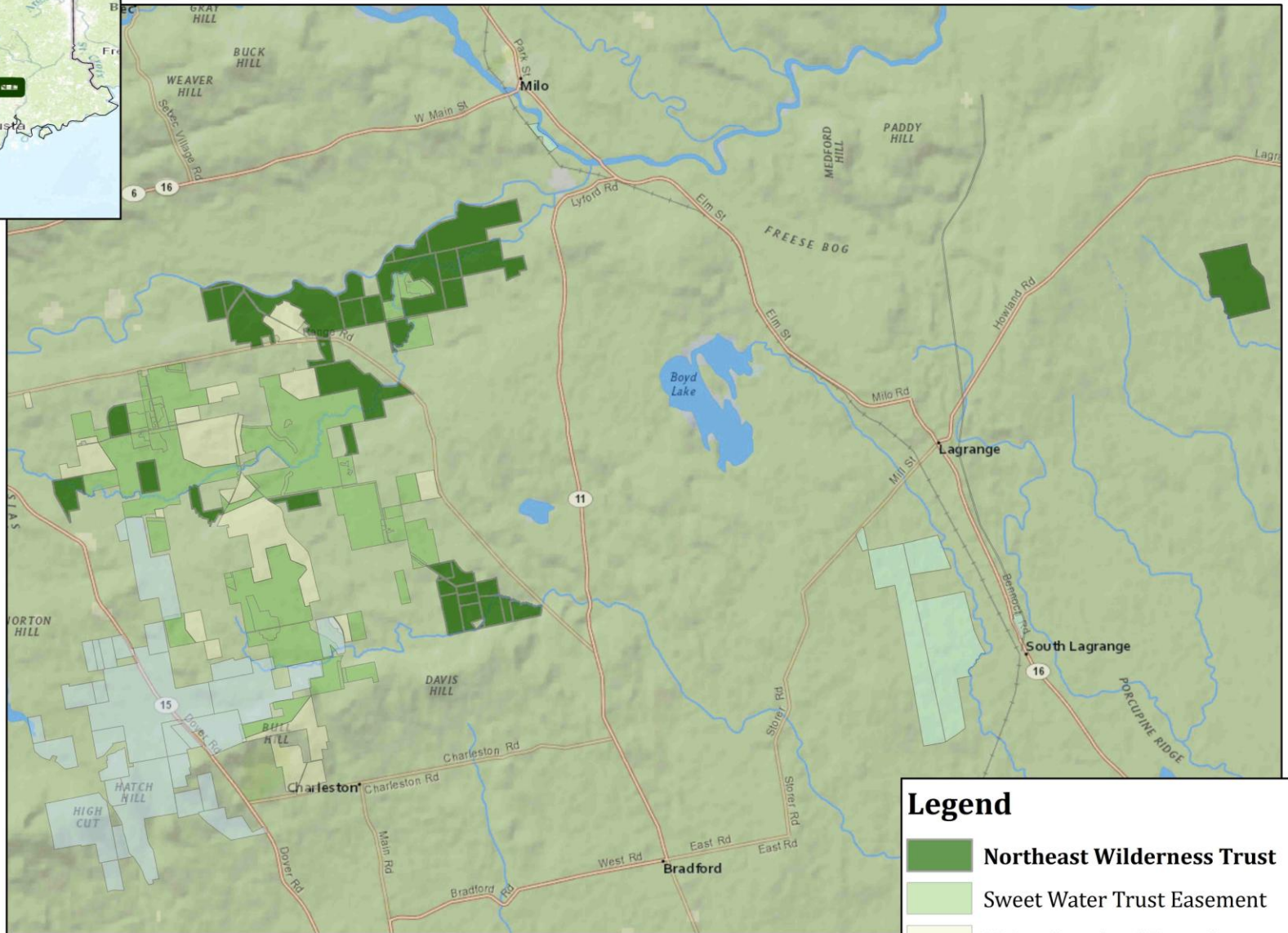








# Northeast Wilderness Trust in Maine

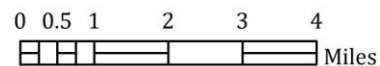


## Legend

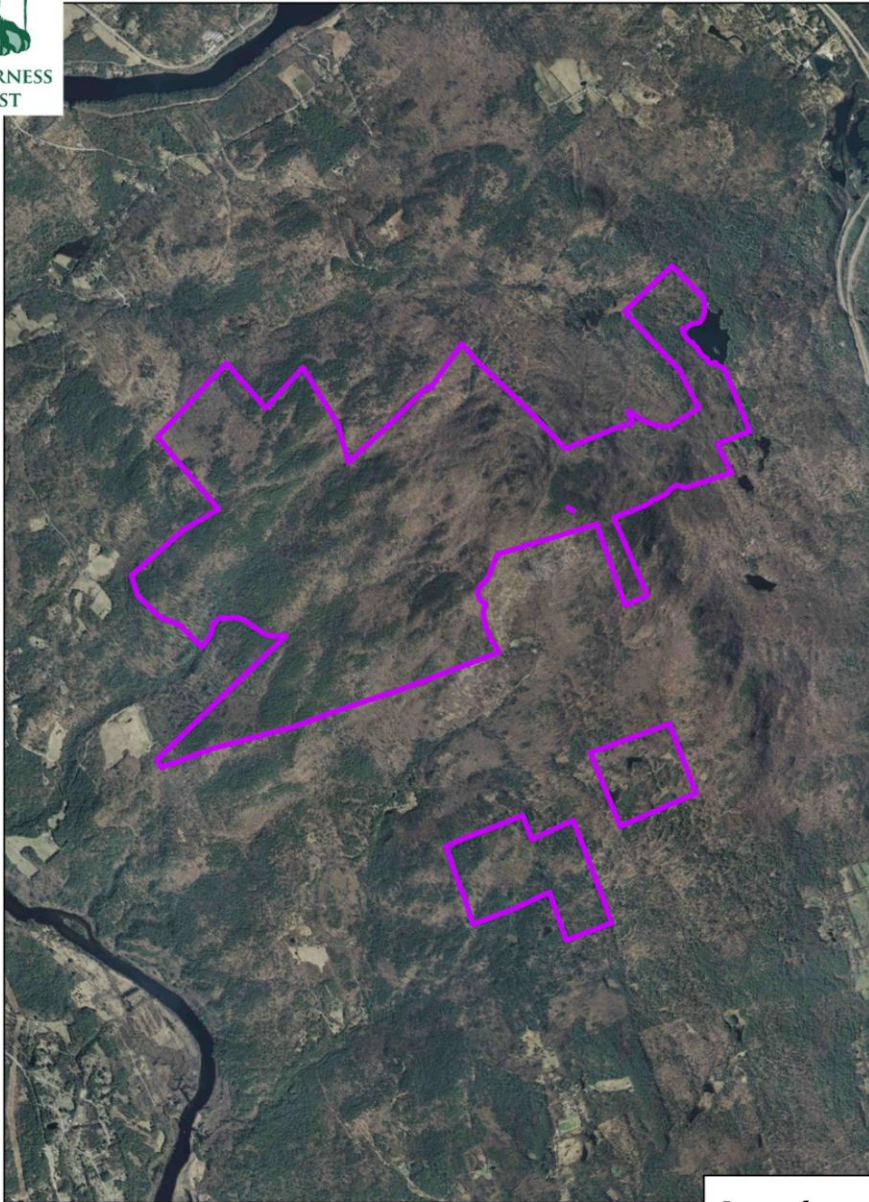
- Northeast Wilderness Trust
- Sweet Water Trust Easement
- Maine Farmland Trust Easement
- Bud Hill WMA
- Maine Bureau of Parks and Lands



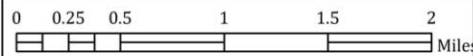
Map Created by: Marisa Riggi  
Northeast Wilderness Trust  
2/12/2013



## Hersey Mountain



In 2007, NEFF donated to NWT a “Forever Wild” Easement on 2,141 acres within a 3,134 acre property in New Hampshire’s lakes region

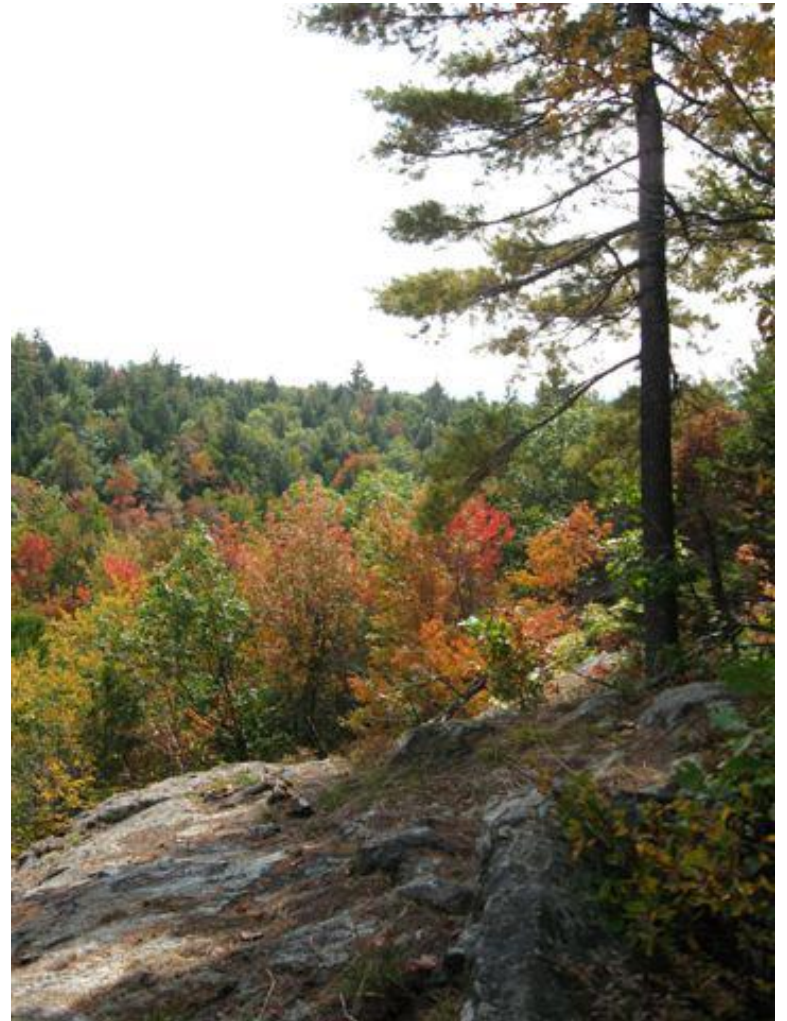
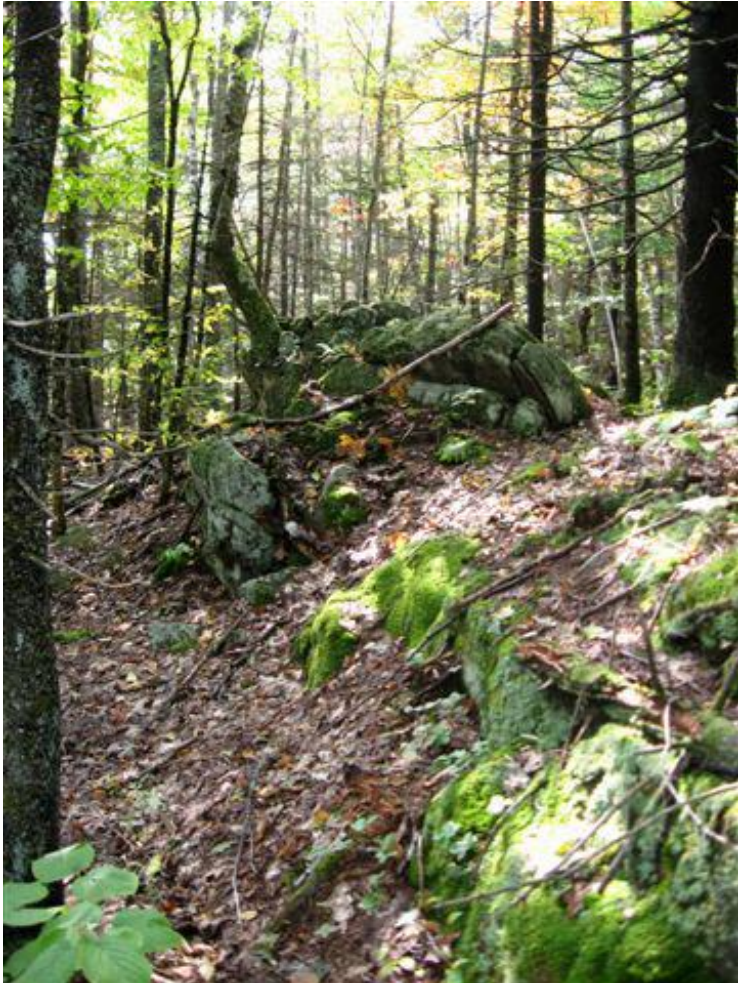


Map created by:  
Marisa Riggi  
Northeast Wilderness Trust  
8/21/2013

### Legend

 Hersey Mountain





# What we are missing...

Big trees

Rich and diverse understory, mosses, ferns...

Big Carnivores

Rivers and Wetlands free to move



What else we're missing...

Opportunities to connect with  
landowners and donors who WANT  
Wildlands